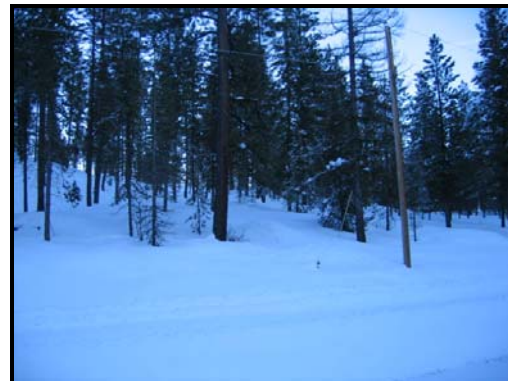


www.rusticrealtyinc.biz



PRICE DRASTIC REDUCTION: \$310,000

ADDRESS: Sumpter

LISTING AGENT: Ilena Fleming

LISTING: H-1730

“Timber - Water - Cabin”
107 acres +/- 1 mile out of Sumpter
Could apply for LOP Tags

Easy accessible off black top Granite Hwy.
1 bed 1 bath Cabin, all utilities. 480 sq/ft +/-
Another cabin, no utilities.
2 out buildings.

Private - Oregon State forest fire thinned (North side of Highway.)
McCulley Creek runs length along hwy, also large portion of pond.
Portions of Historic old Patent mining Claim “Mary Agnes.”

TERMS: CASH OR NEW LOAN
MAP#: 09S3730 TL: 400
TAXES : 07 478.23

THIS INFORMATION IS FROM SOURCES DEEMED RELIABLE, BUT IS NOT GUARANTEED BY THE AGENT AND IS SUBJECT TO PRIOR SALE, PRICE CHANGE, CORRECTION OR WITHDRAWAL. INTERESTED BUYERS SHOULD INSPECT THIS PROPERTY AND VERIFY ALL INFORMATION.

Main Office In Baker:

975 Campbell St. Suite “A”-Baker City, OR 97814
Office: (541) 523-8000 Fax: (541) 523-8001
Ilena R. Fleming, GRI. Principal Broker /Owner
ilena@rusticrealtyinc.biz
Barbara England, Broker
barbara@rusticrealtyinc.biz

Branch Office in Sumpter:

110 S. Mill
P.O. Box 370
Sumpter, OR 97877
Office: (541) 894-0116 Fax: (541) 894-0119
Ilena R. Fleming, GRI. Principal Broker /Owner
ilena@rusticrealtyinc.biz

www.rusticrealtyinc.biz