

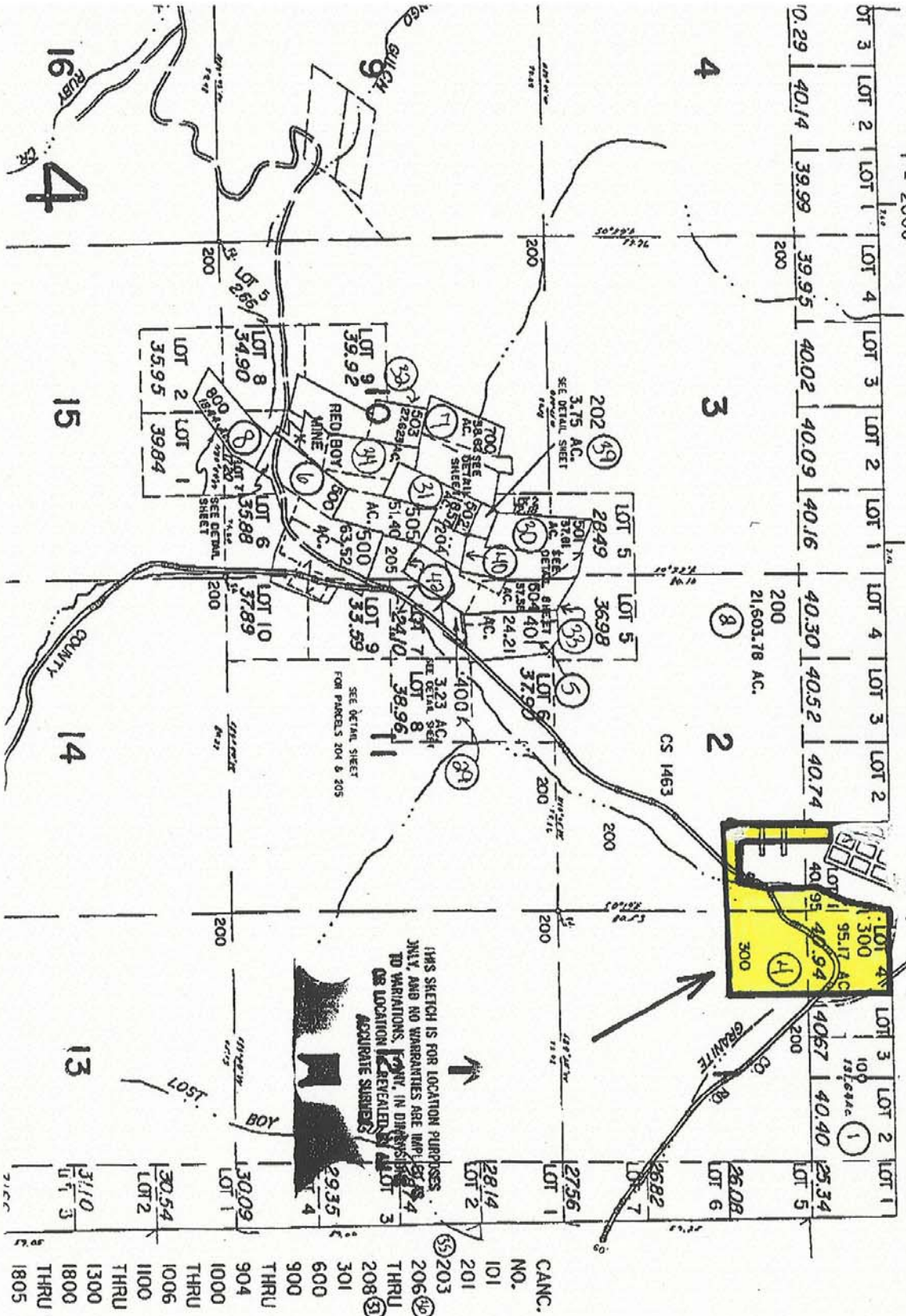
T.9S. R35E. W.M.  
GRANT COUNTY

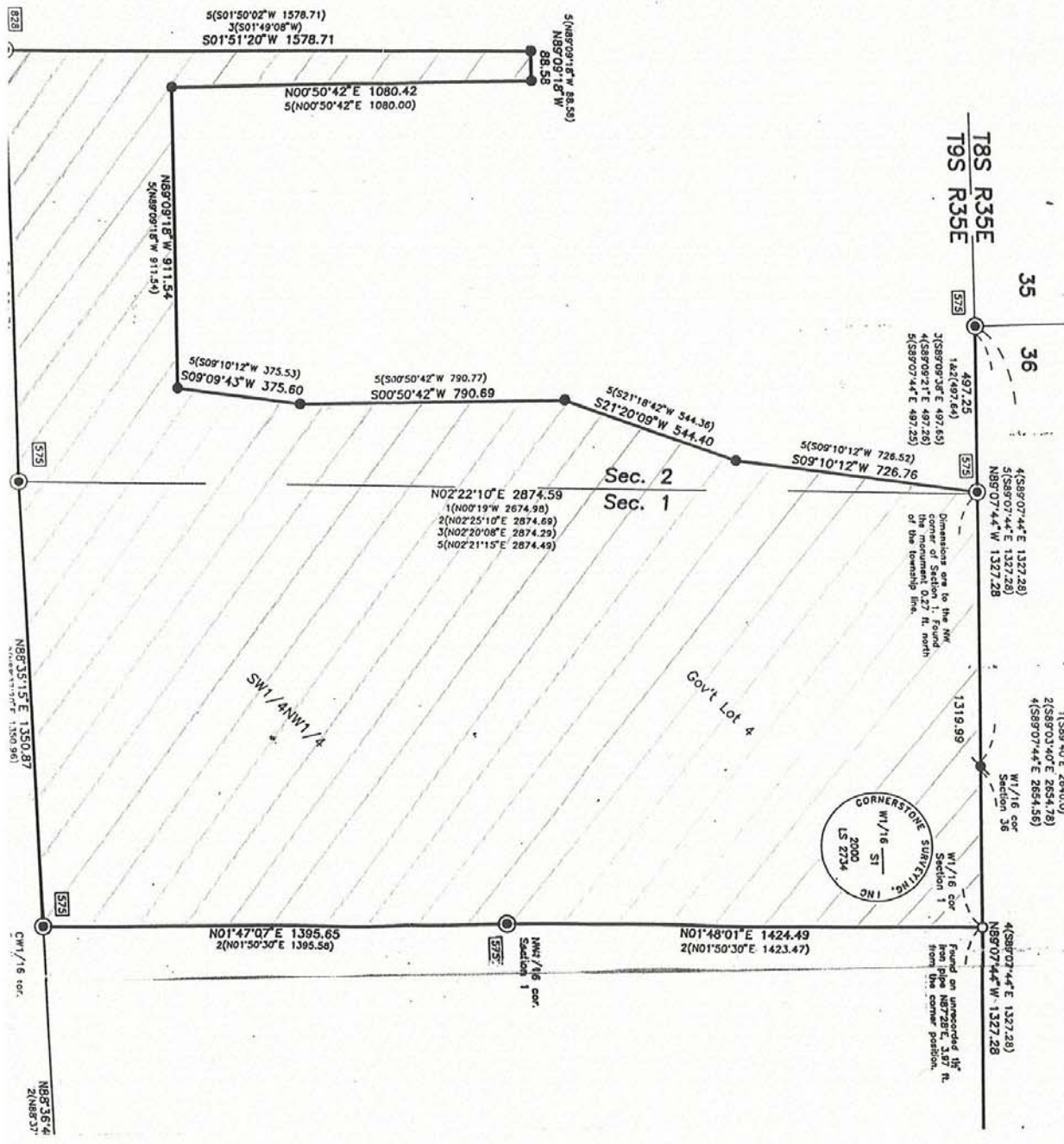
1" = 2000'

- ① 311
- ⑬ 13
- ⑧ 8
- ④ 4

SEE MAP  
9 35 2A

9 35  
412





**BASIS OF BEARINGS**

N89°07'44"W 2654.56  
 1(S89°40'E 2654.0)  
 2(S89°03'40"E 2654.78)  
 4(S89°07'44"E 2654.56)

Dimensions run to the NW corner of Section 1. Found on the township line.

Found on unrecorded 18" iron pipe N87°28'E, 187 ft. from the corner position.