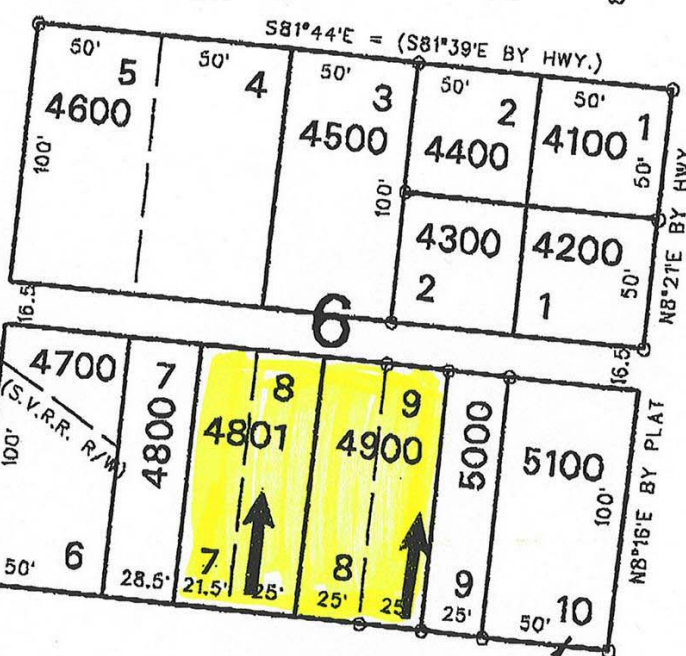


# R 5-3

## SUMMIT ST.

(SPELLING BY PLAT BY AERIAL SURVEY)

# CENTRE

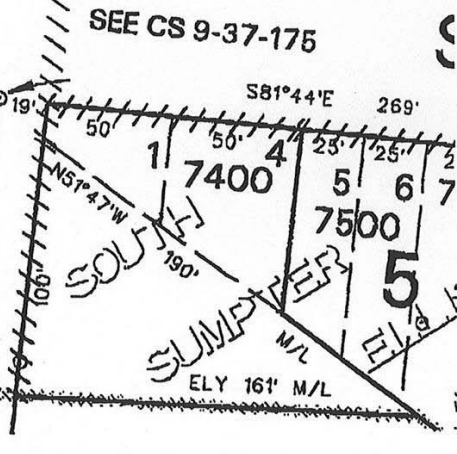


# MILL



# AUBURN

ASSESSED BY  
DEPT. OF  
REVENUE  
PCM 1971-154



SEE CS 9-37-175

# HWY. 220

CELL BASELINE

ELY 161' M/L